



**Owner's Manual**  
Version 1.0 - May 2012

[www.amazingmachines.com.br](http://www.amazingmachines.com.br)

 **AMAZING  
MACHINES**

***NASTYmono***

**FEEDBACK CONTROLLER AND  
I/O ADAPTER FOR THE  
KORG MONO SERIES**

## INTRODUCTION

Thank you, and congratulations on your choice of the Amazing Machines NastyMono - Feedback Controller and I/O Adapter for the KORG Mono Series.

Amazing Machines will not accept responsibility for any damages, personal loss or injury that may result from the use of the NastyMono.

MONOTRIBE and MONOTRON are a trademarks of KORG Inc. Japan, all other trademarks and copyrights are property of their respective owners.



# CONTENTS

Chapter 1 - Introduction to Analog Feedback .....	1
Chapter 2 - NastyMono User's Guide .....	2
NastyMono Features .....	2
NastyMono Compatibility .....	2
Connecting the NastyMono to a KORG Monotribe - Standard Mode .....	3
Connecting the NastyMono to a KORG Monotribe - Double Feedback Mode .....	4
Connecting the NastyMono to a KORG Monotron .....	5

## CHAPTER 1 - INTRODUCTION TO ANALOG FEEDBACK

Analog Feedback is one very old technique which basically consists in taking the output of an analog synth then feeding it back into the VCF input, allowing for a wide palette of distortion effects, from low end boost to gritty, punchy, dirty or nasty screamer and in between.

This technique can be enhanced by using a few electronic components to tailor the effect, this is exactly what we have done with the NastyMono, adding a pretty simple circuit which consists in a Fixed Passive Low Pass Filter to clean up the Feedback Path and adjust the NastyMono's output for the inputs found on the KORG Monotribe and Monotrons.

Many synthesizers have this feature built-in, to name a few:

- Dave Smith Mopho (Feedback)
- Dave Smith Tetra (Feedback)
- Dave Smith Evolver (Feedback)
- Arturia Minibrute (Brute Factor)
- Moog Slim Phatty (Overdrive)
- Moog Little Phatty (Overdrive)

The idea behind the NastyMono is to bring to your Mono Device the same one knob functionality with the extra 1/4" I/O connectivity.

## CHAPTER 2 - NASTYMONO USER'S GUIDE

### NastyMono Features

- Stereo 3.5mm I/O cables
- Mono 1/4" Auxiliary Input
- Mono 1/4" Audio Output
- Feedback Attenuator for Optimal Control over the Feedback Path
  - Fixed Passive Low Pass Filter to clean up the Feedback Path
  - Passive Device, no batteries or PSU needed

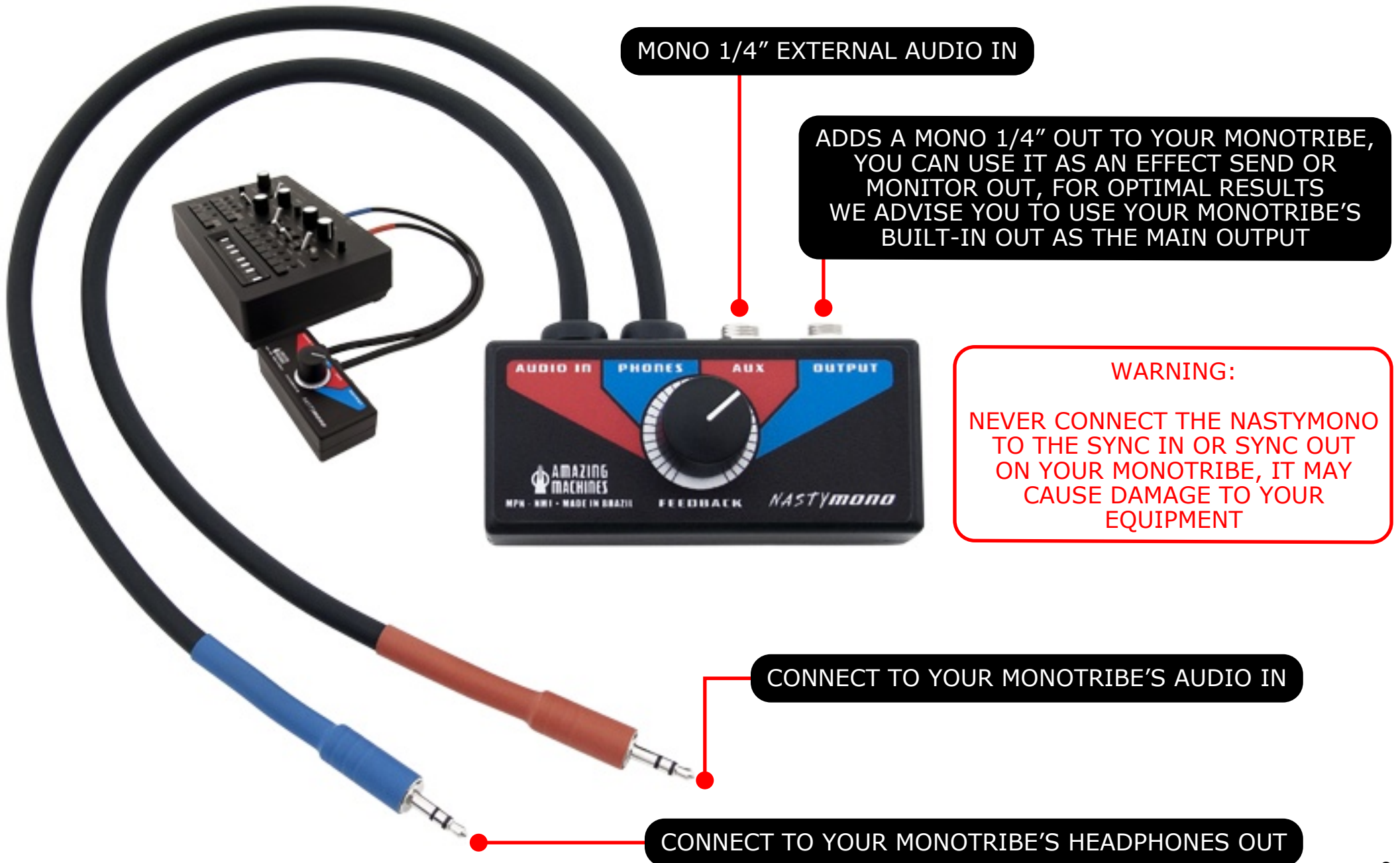
### NastyMono Compatibility

The NastyMono was designed for the KORG Mono Series and will work properly with any of the following devices:

Monotribe  
Original Monotron  
Monotron Duo  
Monotron Delay

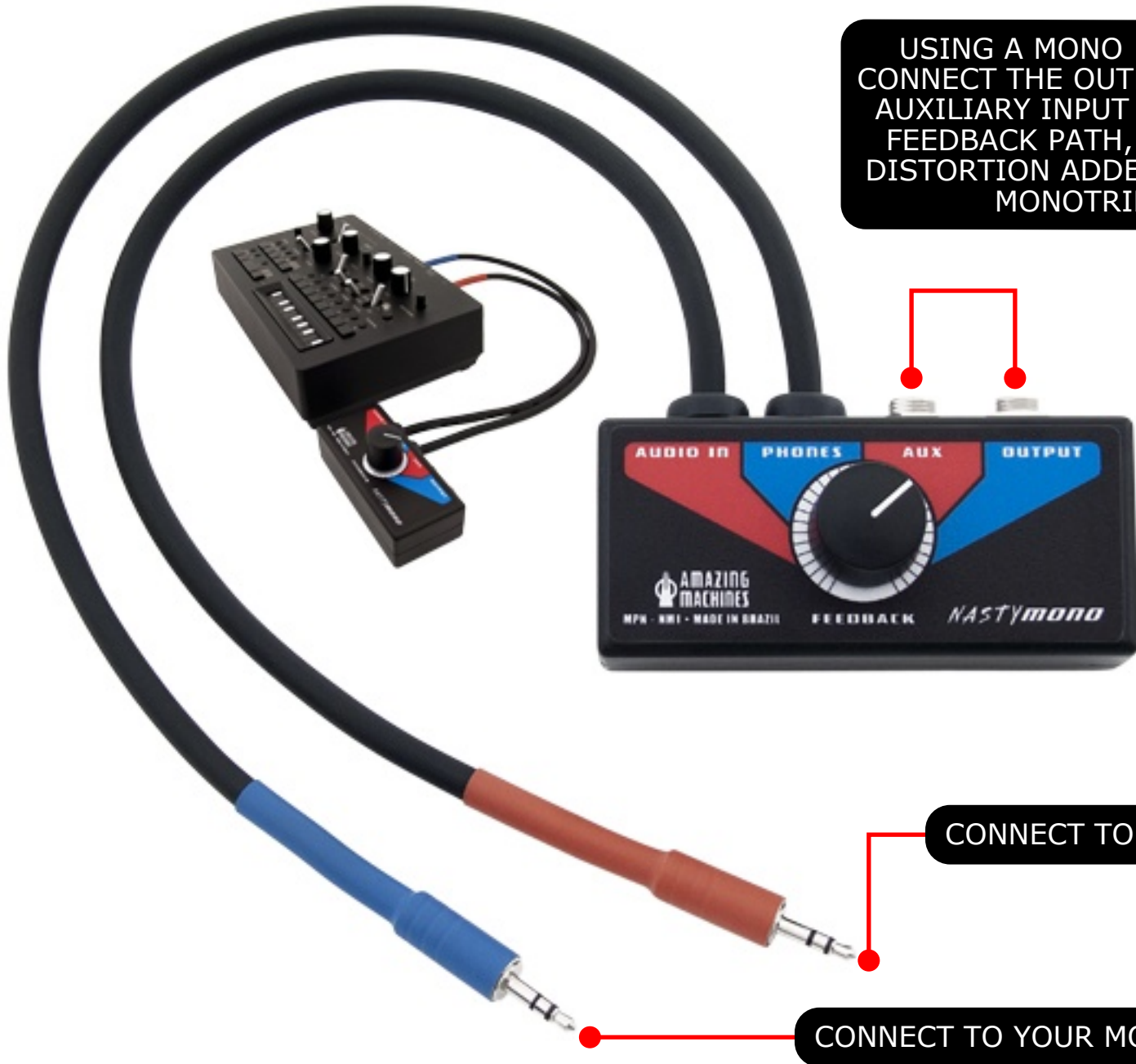
You still can use the NastyMono with any other Analog Synth that features a VCF Input and Multiple Audio Outputs or a Separate Headphones Output. However due to the nature of the KORG Mono Series the 1/4" Auxiliary Input and the 1/4" Audio Output Signals on the NastyMono rely on the RING contacts found on the 3.5mm I/O cables, there for the 1/4" Auxiliary Input won't work if your Synth features a Mono VCF Input, the same goes for the 1/4" Audio Output, if the NastyMono is being feed by a Mono Signal the 1/4" Audio Output won't work. Despite the fact that the 1/4" connectors won't work depending on your specific Analog Synth, the Feedback Knob will still work, giving you the desired Distortion Effect, a nice example is the Moog Minitaur which will keep all the NastyMono's functionality except for the 1/4" Auxiliary Input.

# Connecting the NastyMono to a KORG Monotribe - Standard Mode



# Connecting the NastyMono to a KORGE Monotribe - Double Feedback Mode

USING A MONO 1/4" PATCH CABLE (NOT INCLUDED) CONNECT THE OUTPUT JACK ON THE NASTYMONO TO THE AUXILIARY INPUT TO ADD THE RIGHT CHANNEL TO THE FEEDBACK PATH, THIS WILL DOUBLE THE AMOUNT OF DISTORTION ADDED TO THE OUTPUT SIGNAL, USE YOUR MONOTRIBE'S BUILT-IN OUT AS USUAL

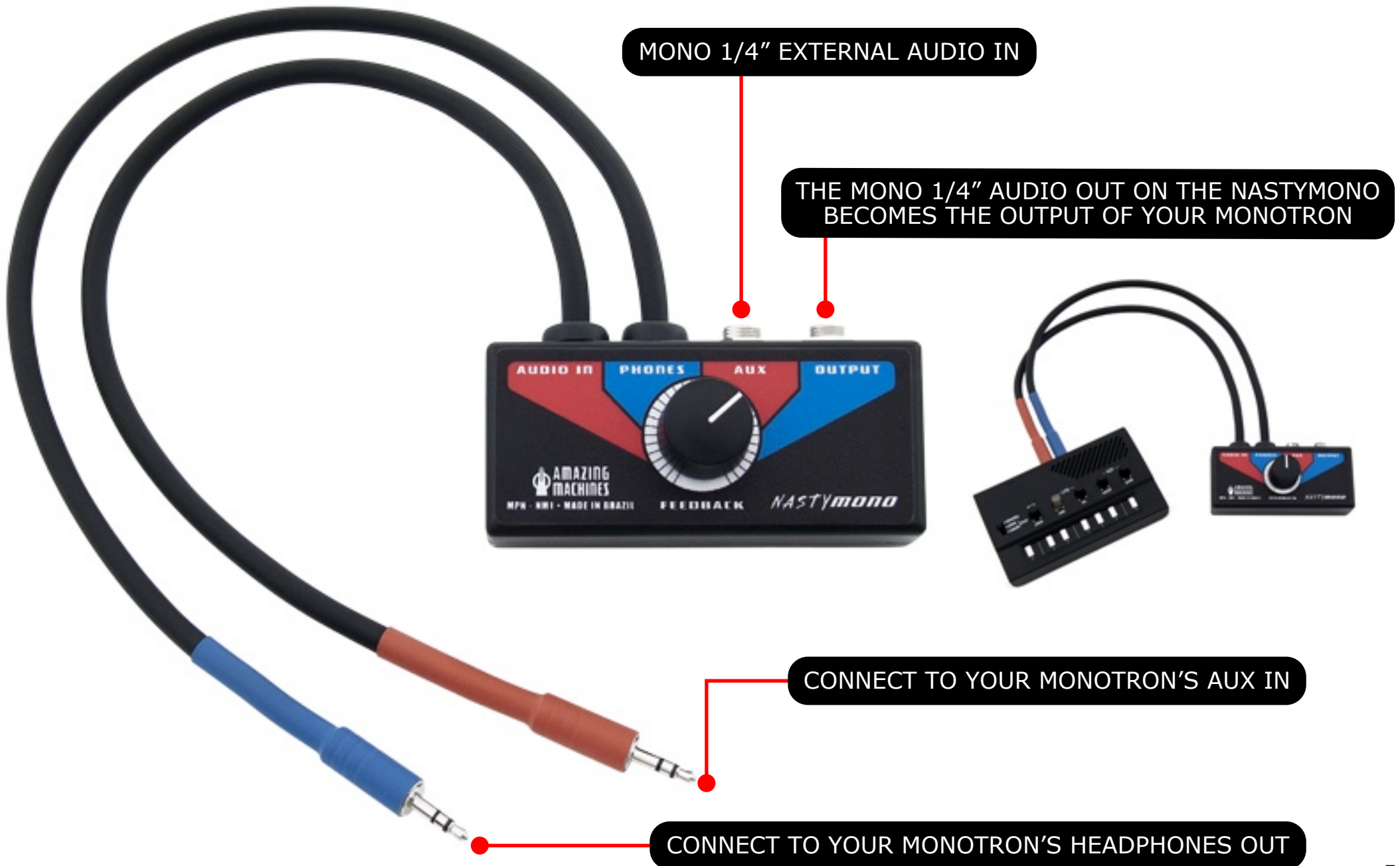


**WARNING:**  
NEVER CONNECT THE NASTYMONO TO THE SYNC IN OR SYNC OUT ON YOUR MONOTRIBE, IT MAY CAUSE DAMAGE TO YOUR EQUIPMENT

CONNECT TO YOUR MONOTRIBE'S AUDIO IN

CONNECT TO YOUR MONOTRIBE'S HEADPHONES OUT

# Connecting the NastyMono to a KORGE Monotron







*NASTYMONO*

MADE IN BRAZIL BY



**AMAZING  
MACHINES**

[www.amazingmachines.com.br](http://www.amazingmachines.com.br)